

6.3 Overview of the structure of the aquaculture production in Skogseidvassdraget

If lack of parr in Skogseidvassdraget;-
Parr will be transferred from Femanger
Laks in ISA-free area 17-2

Bolstad Bruk as
Utlebøen No 10145
Hatchery and cages, same farm

Tveitnes Fiskeoppdrett as
Site Berlandstveit no
10146
Cages only

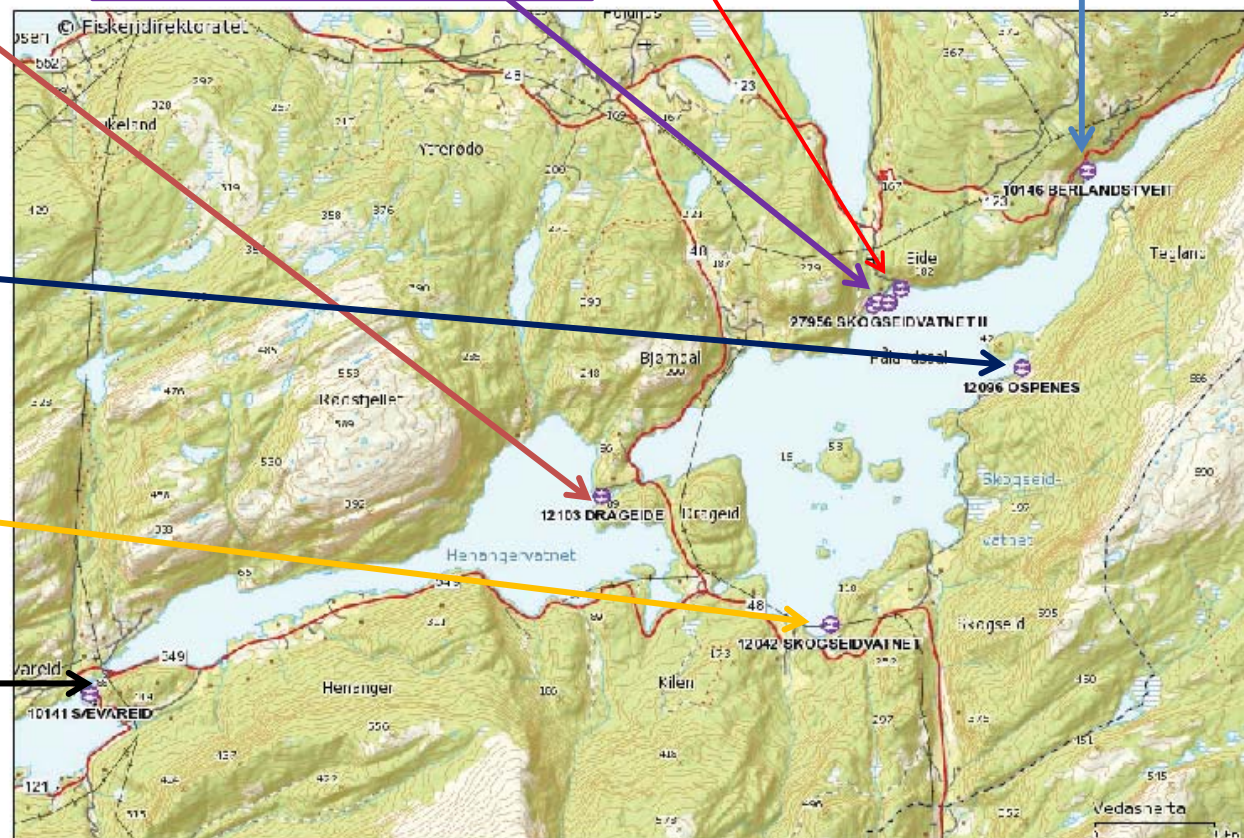
Drageid Laks as
Site Drageide 12103
Hatchery and cages

K.J. Eide as
Site Eidestø no 12041
Hatchery and cages

Bolstad Bruk as
Site Ospeneset 12096
Cages only

Tombre Fiskeanlegg
Site Skogseidvatnet 12042
Cages only

Sævareid Fiskeanlegg as
Site Sævareid 10141
Hatchery and tanks



Målestokk: 1:17 757

6.3 Overview production at KJ Eide and Bolstad Bruk in Skogseidvassdraget

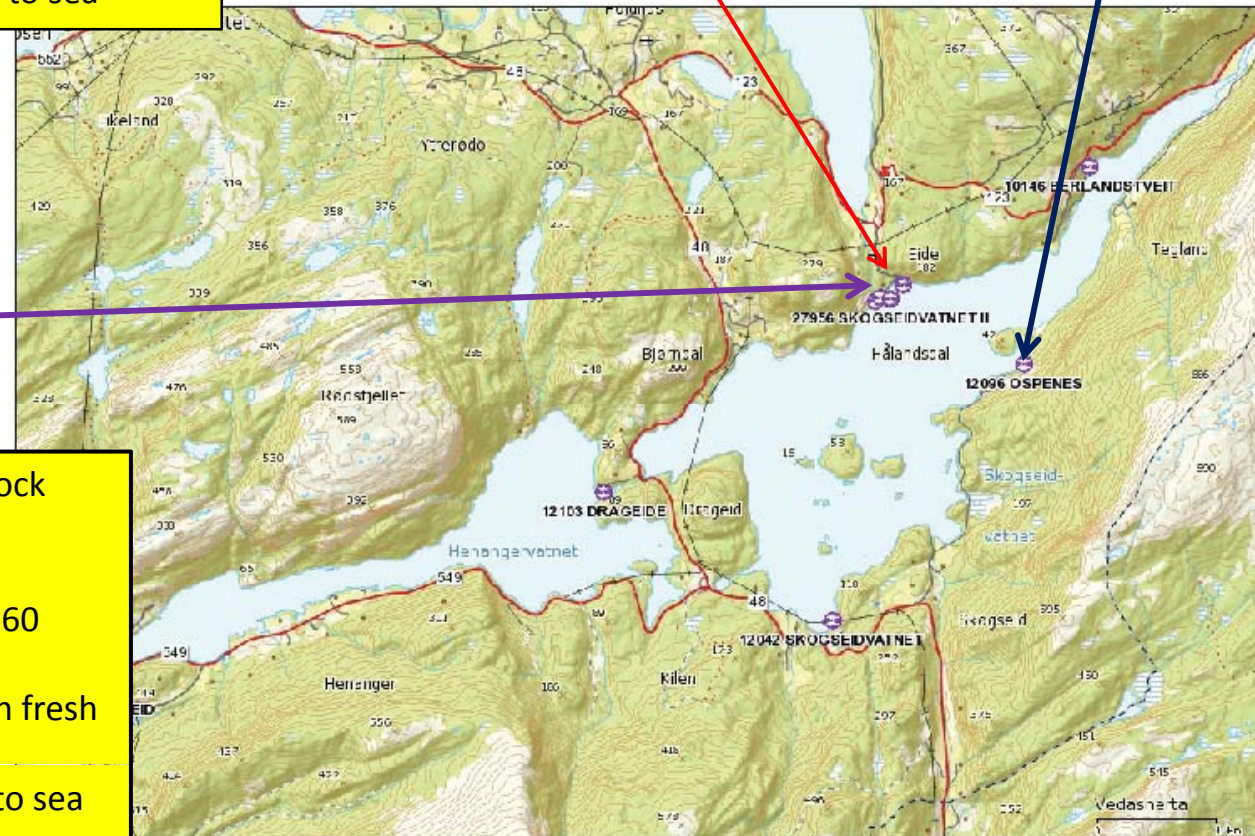
Eyed eggs from ISA-free brood stock (Bolaks)
Startfeeding in tanks
On growing in tanks to appr 10 gr
Transferred at 10 gram to cages in fresh water outside the hatchery
Transferred at 10 gram to cages in fresh water at Ospeneset
Transferred as smolt with trucks to sea

Bolstad Bruk as
Utlebøen No 10145
Hatchery and cages, same farm

Bolstad Bruk as
Site Ospeneset 12096
Cages only

K.J. Eide as
Site Eidestø no 12041
Hatchery and cages

Eyed eggs from ISA-free brood stock (Aquagen)
Startfeeding in tanks
On growing in tanks to appr 10 – 60 gram
Transferred at 10 gram to cages in fresh water outside the hatchery
Transferred as smolt with trucks to sea



Målestokk: 1:17 757

6.3 Overview production at Drageid Laks and Tombre Fiskeanlegg in Skogseidvassdraget

Eyed eggs from ISA-free brood stock
Startfeeding in tanks
On growing in tanks to at least 10 gram
Transferred at 10 -50 gram to cages in fresh water outside the hatchery, site Drageide
Transferred at 10 -50 gram to cages in fresh water atTombre Fiskeanlegg, Skogseidvannet
Transferred as smolt with trucks to sea

Drageid Laks as
Site Drageide 12103
Hatchery and cages

Tombre Fiskeanlegg
Site Skogseidvatnet 12042
Cages only



Målestokk: 1:17 757

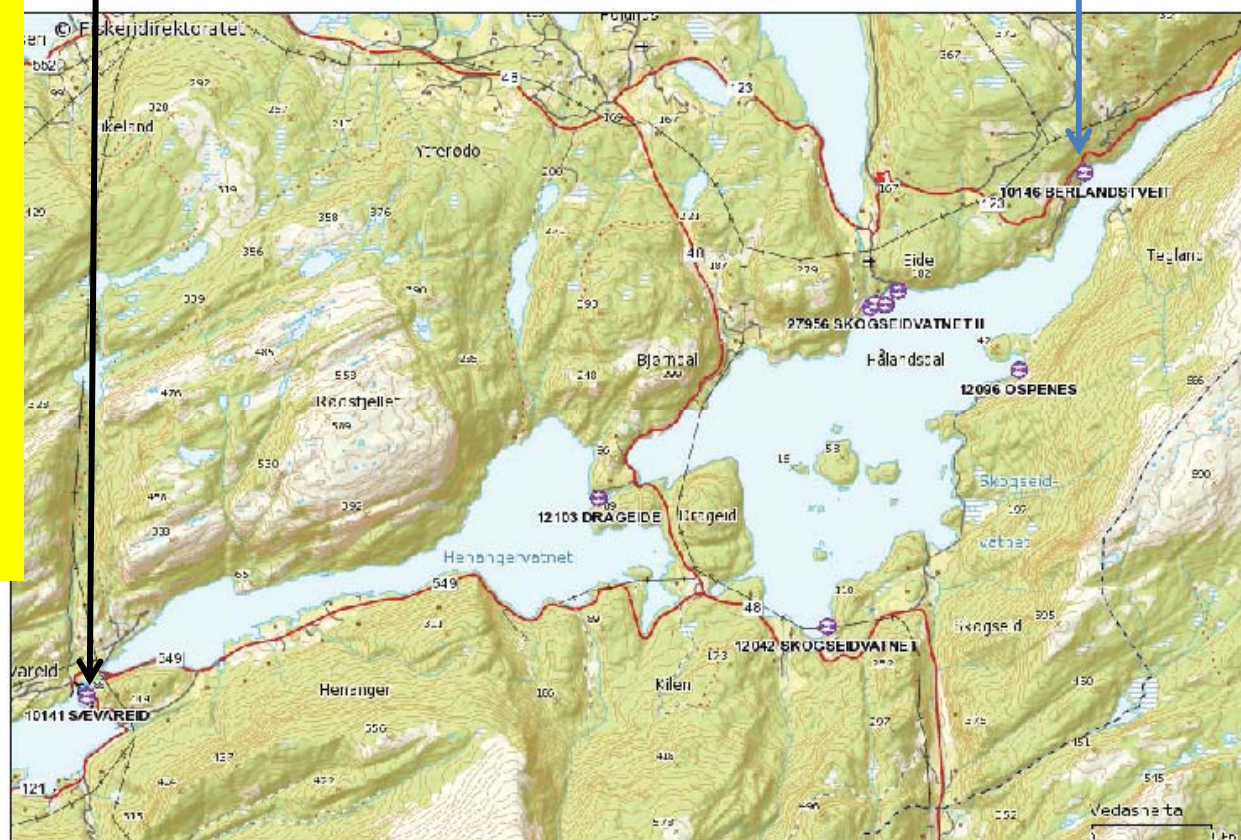
6.3 Overview production at Sævareid Fiskeanlegg and Tveitnes Fiskeoppdrett, site Berlandstveit in Skogseidvassdraget

Eyed eggs from ISA-free brood stock transferred to Sævareid
All the production at Sævareid in ordinary fresh water tanks
The main production is smolt transferred from Sævareid to sea sites with well boats

Parr transferred June-July from Sævareid to Berlandstveit with trucks
Parr og smolt transferred October from Berlandstveit to Sævareid with trucks
Berlandstveit fallowed during winter and spring

Sævareid Fiskeanlegg as
Site Sævareid 10141
Hatchery and tanks

Tveitnes Fiskeoppdrett as
Site Berlandstveit no 10146
Cages only



Målestokk: 1:17 757